

FEMALE INFANTICIDE and MORALITY – A Thought





Met this beautiful soul at someone's housewarming party. She looked at me as if there were a lot of unfinished talks that needed to be completed - Within a second, she came to me from her father and rested on my shoulder to have a long wordless discussion with me. Her name unfolded the mystery of this connection - **She was Asees Kaur; the blessing.**

She came to bless me with her presence. At the same time, it reminded me of everyone who is void of this blessing as they commit themselves to the horrible crime of female infanticide and don't let daughters come into their life. This beautiful soul gave me a whole new perspective to this topic of Female Infanticide and its downsides.

The topic that I been invited to speak to a group of people in Perth tonight - **Hope her blessings help me convey the message in the right spirit.**

Let's Go Back in Time

OVER THE CENTURIES, FEMALE DISCRIMINATION HAS EXISTED IN ALL PARTS OF THE GLOBE AND IT HAS DEPRIVED WOMEN OF

- PERSONAL INDEPENDENCE
- FAMILY CHOICES
- SOCIAL FREEDOM
- RELIGIOUS INDEPENDENCE
- ECONOMIC FREEDOM
- **RIGHT TO LIVE**



INDIA WAS BLESSED TO GET SOCIAL REFORMS THROUGH SPIRITUAL MOVEMENTS



SPIRITUAL MOVEMENT

During 14th – 17th Century, India witnessed Spiritual Movement, which changed the fabric of society and brought the focus to **Inner Consciousness** as opposed to **Gender, Caste, Economic Status and Religion**.

ਸਭ ਮਹਿ ਜੋਤਿ ਜੋਤਿ ਹੈ ਸੋਇ ॥
ਤਿਸ ਦੇ ਚਾਨਣਿ ਸਭ ਮਹਿ ਚਾਨਣੁ ਹੋਇ ॥

The driving energy within all of us is same and it's giving us the light / guidance in the form of wisdom.

ਜਾਣਹੁ ਜੋਤਿ ਨ ਪੂਛਹੁ ਜਾਤੀ ਆਗੈ ਜਾਤਿ ਨ ਹੇ ॥੧॥

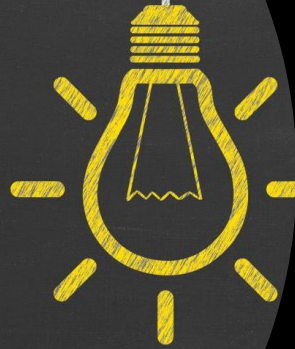
We should understand each other with the virtues as opposed to physical appearance, possessions and status (material).

Driving Force within all of us is same



SPIRITUALITY DRIVEN CUSTOMS

After moving the focus to consciousness, Spiritual beings then translated these principles into social dimensions and guided humanity to redefine them; **including the ones impacting WOMEN**



ਹਰਿ ਪ੍ਰਭੂ ਮੇਰੇ ਬਾਬੁਲਾ ਹਰਿ ਦੇਵਹੁ ਦਾਨੁ ਮੈ ਦਾਜੇ ॥
ਹਰਿ ਕੰਪੜੇ ਹਰਿ ਸੋਭਾ ਦੇਵਹੁ ਜਿਤੁ ਸਵਰੈ ਮੇਰਾ ਕਾਜੇ ॥

Instead of Money focus on dowry of Virtues

ਸਤੀਆ ਏਹਿ ਨ ਆਖੀਅਨਿ ਜੇ ਮੜਿਆ ਲਗਿ ਜਲੰਨਿ ॥
ਨਾਨਕ ਸਤੀਆ ਜਾਣੀਅਨਿ ਜਿ ਬਿਰਹੇ ਚੋਟ ਮਰੰਨਿ ॥੧॥

Real Satti are the ones who burn their self centered thoughts. //

DOWNFALL FROM SPIRITUAL CUSTOMS



- In last few decades, we have witnessed a **massive shift in Moral Compass** – where mindfulness was part of the culture.
- Adoption of modernism at the **compromise** of traditional values led to new norms in the society.
- This has created a **confusion** in the society. Dropped the moral values and unable to fully capitalize on the benefits of modernisation.

BIGGEST IMPACT IS ON WOMEN



CONCEALED THE DIALOGUE OF SPIRITUAL MOVEMENT



- Lack of focus on educating our next generation about Inner Consciousness.
- Education has become unidimensional – **how to earn more and more \$\$**
- Concept of How to Be a BETTER Human or **Even Be a HUMAN** is missing



IMPACT ON WOMEN



- All of this has led us ignore women's contribution to nurture our society – **which is priceless**
- We often perceive female child as a **liability**
- Our focus has shifted so much from JOT (Virtues) to GENDER that we are now **even denying our female child to come into existence**
- And the ones who are born, they are deprived of social, personal, **educational**, health, economic choices

It has taken us to new low levels





FEMALE FOETICIDE – A NEW LOW



Even animals are ashamed of us.

- Even animals are much more in **acceptance of natural lifestyle**; Understand the role both genders play to progress the species.
- The land that gave birth to most astute spiritual leaders on the planet and guided humanity is now **witnessing this horrible crime**
- The place that should have been the beacon to develop frameworks for ethical uses of these medical advancements is **struggling other way round**



WISDOM (MOTHER) IS SLAYED

As woman leads the progression of next generation, so does the spiritual wisdom

ਮਾਤਾ ਮਤਿ ਪਿਤਾ ਸੰਤੋਖੁ ॥

WISDOM IS MOTHER AND CONTENTMENT IS FATHER

As and when, society **slays Mother** – **(Spiritual Wisdom)**, the impact on (deemed) weaker sections and women (in specific) is obvious.





TAKEAWAY

When there is a change in direction of spiritual compass, the change in physical world is imminent. Choice of Direction is MINE

WHICH DIRECTION AM I TAKING?



DOWNFALL FROM SPIRITUAL CUSTOMS



- In last few decades, we have witnessed a **massive shift in Moral Compass**.
- Degradation of spiritual values is now laced with modernism, capitalism and cunningly developed new norms of society.
- This has impacted all the traditionally weaker sections (deemed) of the society.

BIGGEST IMPACT IS ON WOMEN



—

THANKS

